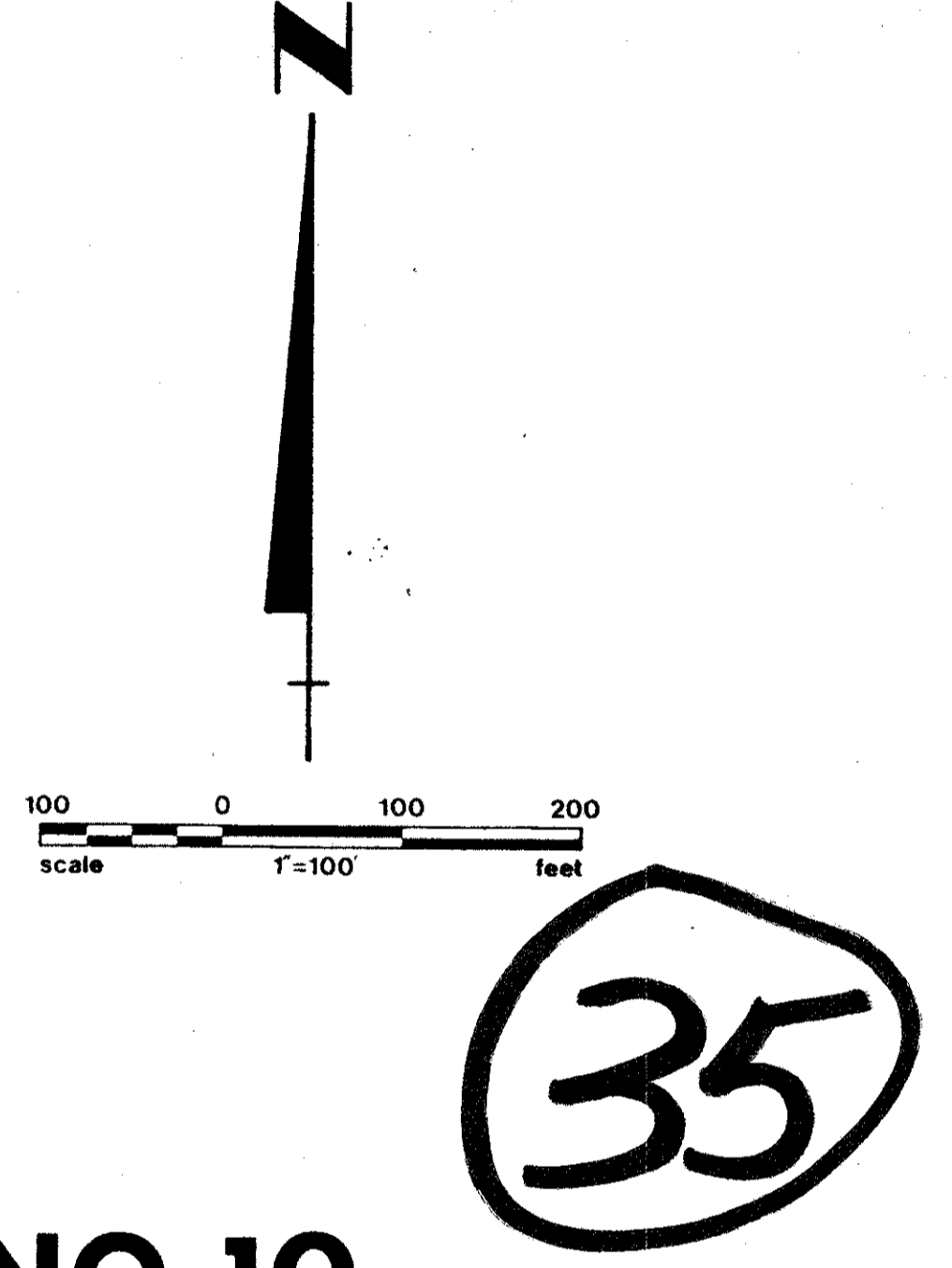
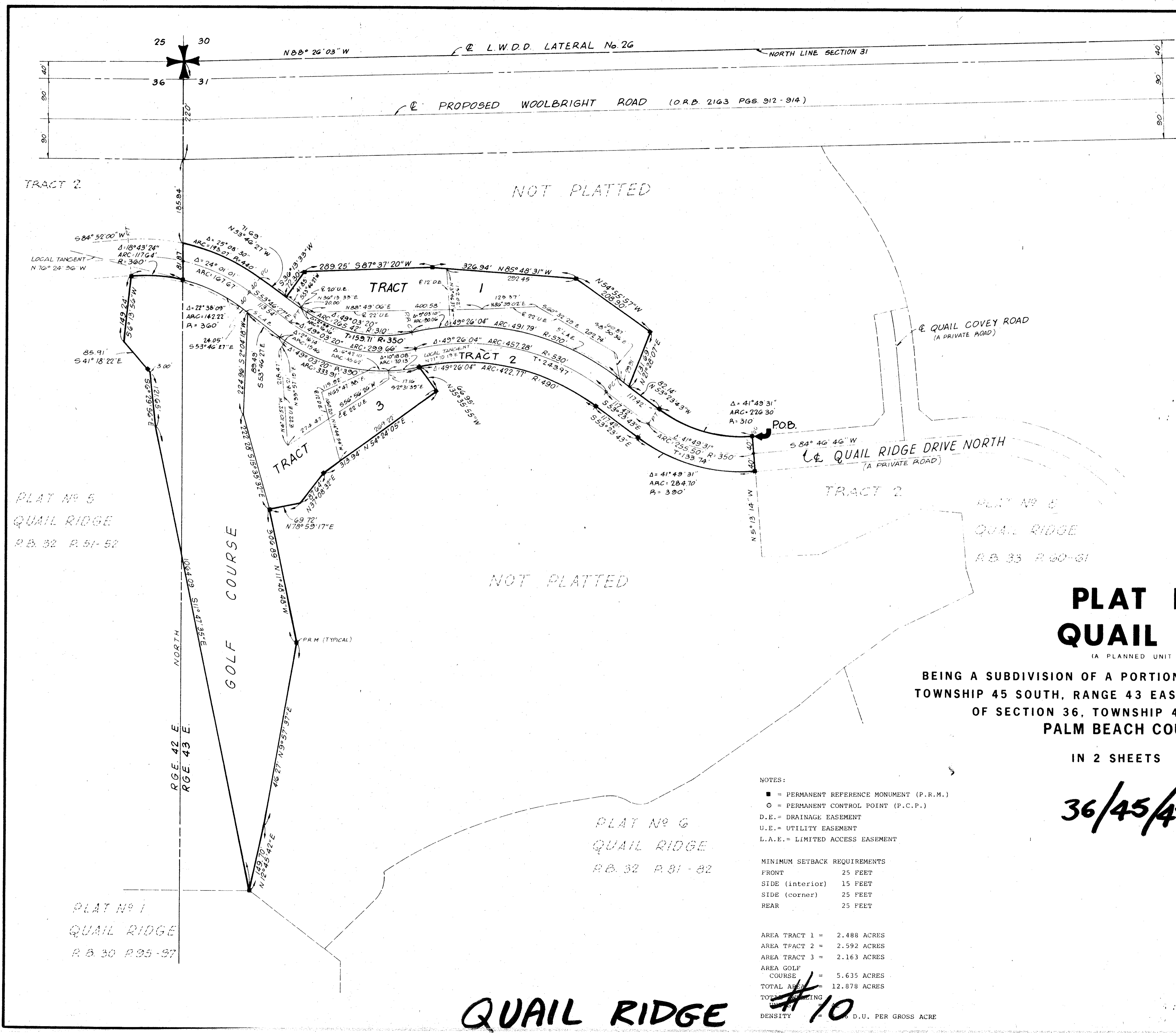


STATE OF FLORIDA  
 COUNTY OF PALM BEACH  
 This Plat was filed for record at  
 this day of , 1978,  
 and duly recorded in Plat Book No.  
 on page  
 By JOHN B DUNKLE Clerk Circuit Court  
 DC



**PLAT NO. 10  
 QUAIL RIDGE**

(A PLANNED UNIT DEVELOPMENT)

BEING A SUBDIVISION OF A PORTION OF THE NW 1/4 OF SECTION 31,  
 TOWNSHIP 45 SOUTH, RANGE 43 EAST, AND A PORTION OF THE NE 1/4  
 OF SECTION 36, TOWNSHIP 45 SOUTH, RANGE 42 EAST  
 PALM BEACH COUNTY, FLORIDA

IN 2 SHEETS SHEET NO. 2

36/45/42

1000-689  
 35/148

- NOTES:
- = PERMANENT REFERENCE MONUMENT (P.R.M.)
  - = PERMANENT CONTROL POINT (P.C.P.)
  - D.E. = DRAINAGE EASEMENT
  - U.E. = UTILITY EASEMENT
  - L.A.E. = LIMITED ACCESS EASEMENT

MINIMUM SETBACK REQUIREMENTS

FRONT	25 FEET
SIDE (interior)	15 FEET
SIDE (corner)	25 FEET
REAR	25 FEET

AREA TRACT 1 =	2.488 ACRES
AREA TFACT 2 =	2.592 ACRES
AREA TRACT 3 =	2.163 ACRES
AREA GOLF COURSE =	5.635 ACRES
TOTAL AREA =	12.878 ACRES
TOTAL DENSITY =	10 D.U. PER GROSS ACRE

QUAIL RIDGE #10

PLAT NO 5  
 QUAIL RIDGE  
 R.B. 32 P. 51-52

PLAT NO 6  
 QUAIL RIDGE  
 R.B. 32 P. 81-82

PLAT NO 1  
 QUAIL RIDGE  
 R.B. 30 P. 35-37

PLAT NO 8  
 QUAIL RIDGE  
 R.B. 33 P. 60-61